

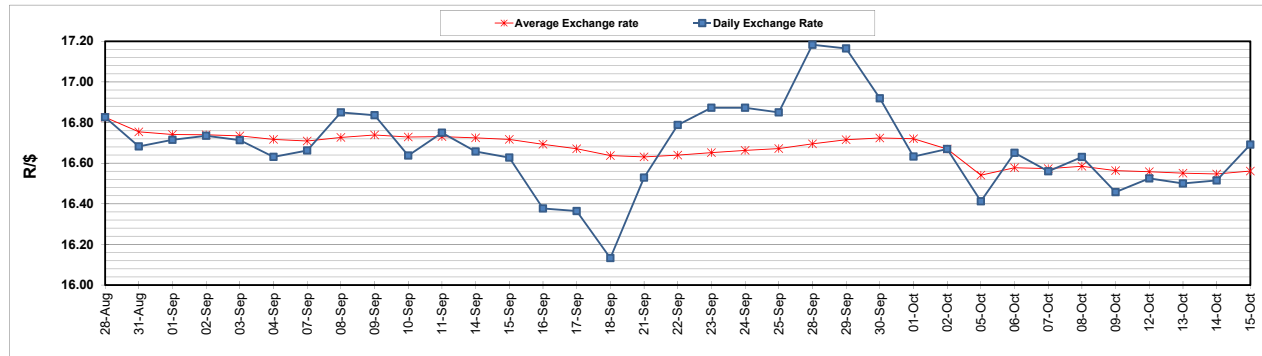
	PETROL 95 ULP	PETROL 93 ULP & LRP	DIESEL 0.05%	DIESEL 0.005%	ILL. PAR.
GAUTENG PUMP PRICE (SA c/l) AS FROM 07/10/2020	1,486.000	1,466.000	-	-	-
WHOLESALE PRICE (SA c/l) AS FROM 07/10/2020	-	-	1,237.560	1,238.960	640.828
SINGLE NATIONAL MAXIMUM RETAIL PRICE	-	-	-	-	798.000
BASIC FUEL PRICE - 15/10/2020 (SA c/l)	521.635	515.192	508.121	510.913	480.420
PRESS RELEASE CONTRIBUTION TO BFP 07/10/2020 - 15/10/2020 (SA c/l)	533.470	523.470	486.630	488.030	436.128
UNIT OVER/(UNDER) RECOVERY - 15/10/2020 (SA c/l)	11.835	8.278	(21.491)	(22.883)	(44.292)
AVERAGE BASIC FUEL PRICE 02/10/2020 - 15/10/2020	526.945	516.910	497.797	499.868	467.605
AVERAGE UNIT OVER/(UNDER) RECOVERY 02/10/2020 - 15/10/2020	16.125	13.460	15.833	16.062	(8.677)

ANALYSIS MOVEMENT OF AVERAGE OVER/(UNDER) RECOVERY

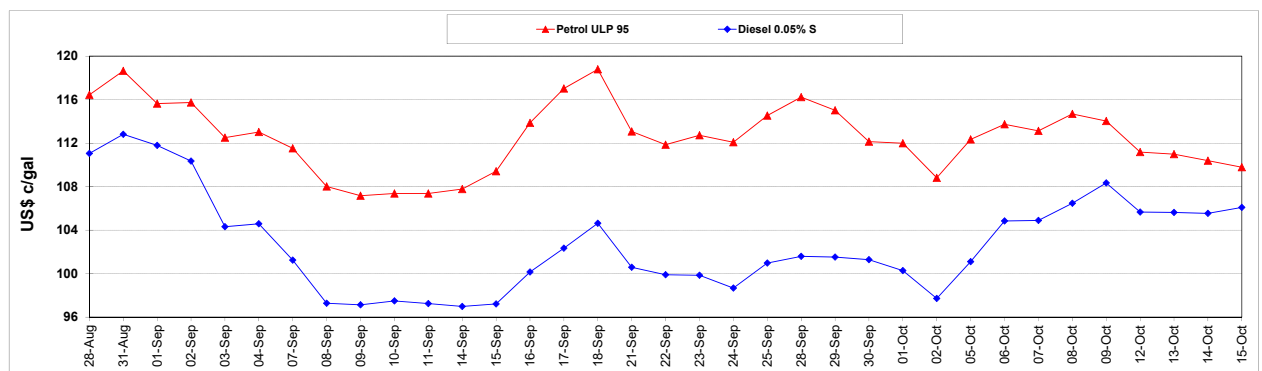
	PETROL 95	PETROL 93	DIESEL 0.05%	DIESEL 0.005%	ILL. PAR.
- MOVEMENT IN INTERNATIONAL PRODUCT PRICES	11.060	8.491	11.048	11.257	(13.172)
- MOVEMENT IN EXCHANGE RATE	5.065	4.969	4.785	4.805	4.495
AVERAGE UNIT OVER/(UNDER) RECOVERY 02/10/2020 - 15/10/2020	16.125	13.460	15.833	16.062	(8.677)

R/\$ EXCHANGE RATE - (R/\$16.6915 - 15/10/2020)

EXCHANGE RATE USED IN BASIC FUEL PRICE



INTERNATIONAL PRODUCT PRICES OF BASKET USED IN BASIC FUEL PRICE



BASIC FUEL PRICE IN SA CENTS PER LITRE

